

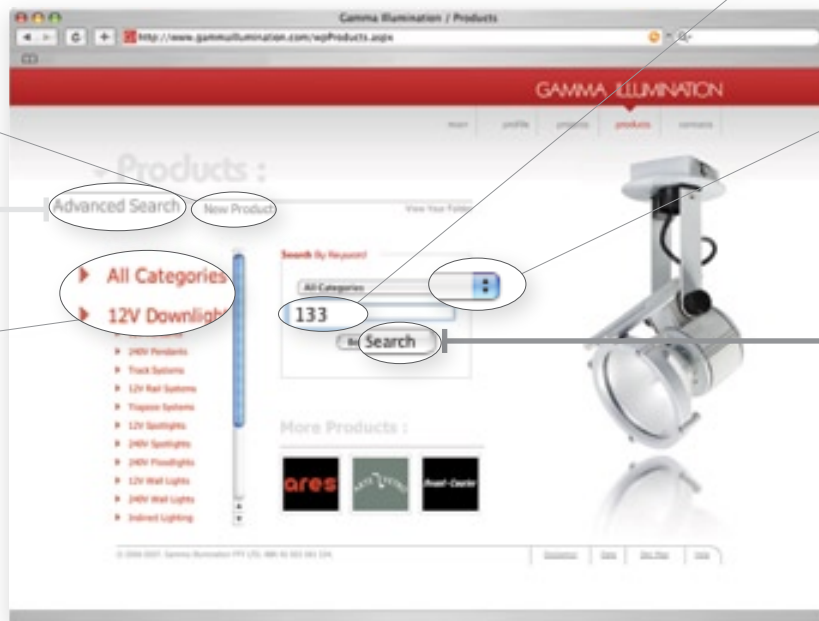
Website Guide :

The following is a guide on how to use our website's *quick* or *advanced* Products Search function to:

1. View results and details.
2. Add result(s) to a folder for later reference.
3. Create a PDF of the result(s).

Go to www.gammaillumination.com and click on the "Products" link to start.

Start Here ▾ Products Quick Search



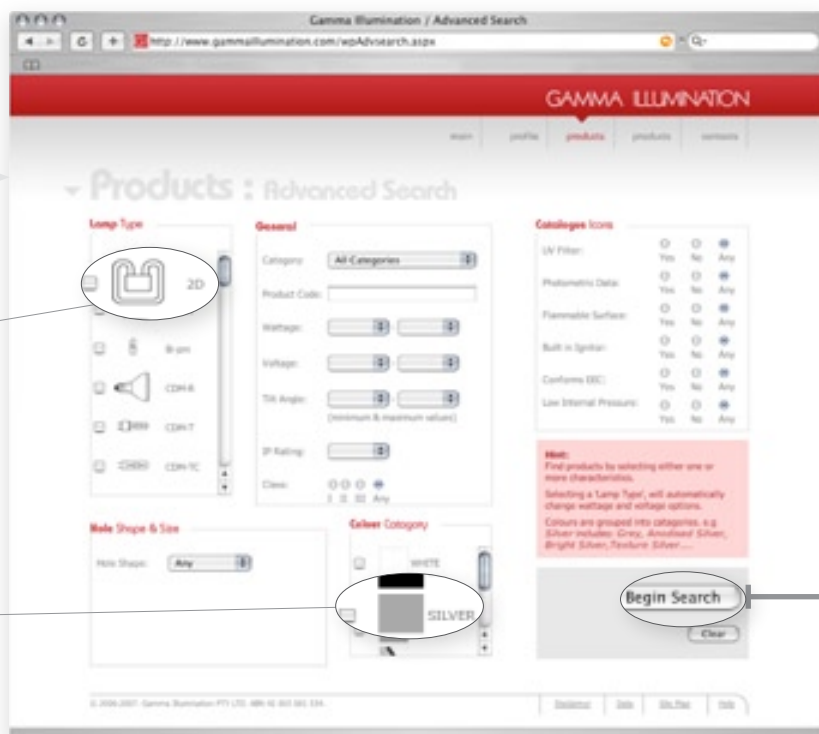
Link to New Products showing all the latest additions to our catalogue.

Browse by category.

Search field can include any keyword or part of a code number.

Use this dropdown menu to narrow your search to a particular category.

OR Start Here ▾ Products Advanced Search

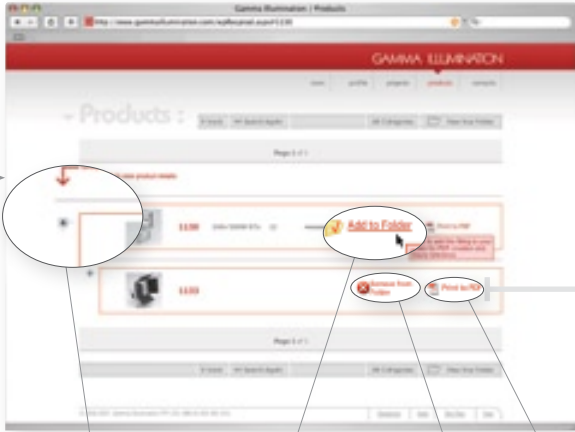


Selecting a Lamp Type will automatically reset the dropdown options in the General table.

Colours are grouped into categories. e.g Silver includes: Grey, Anodised Silver, Bright Silver, Texture Silver, Pearlescent Silver.

Begin Search

Second Level ▾ Search Results



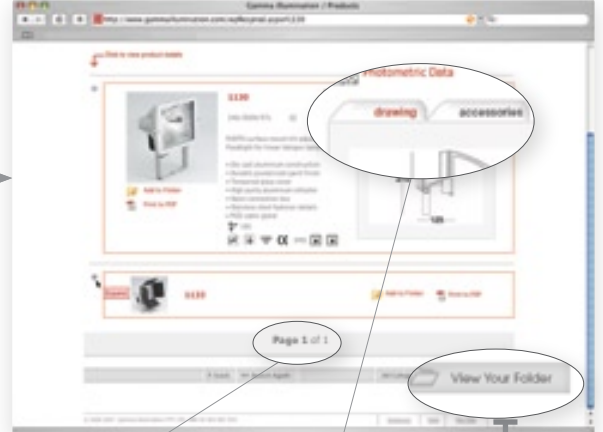
Expand/Collapse button - expands to show details of product (next screenshot).

Click to add product to your folder.

Click to remove product from your folder.

Click to create a PDF of product.

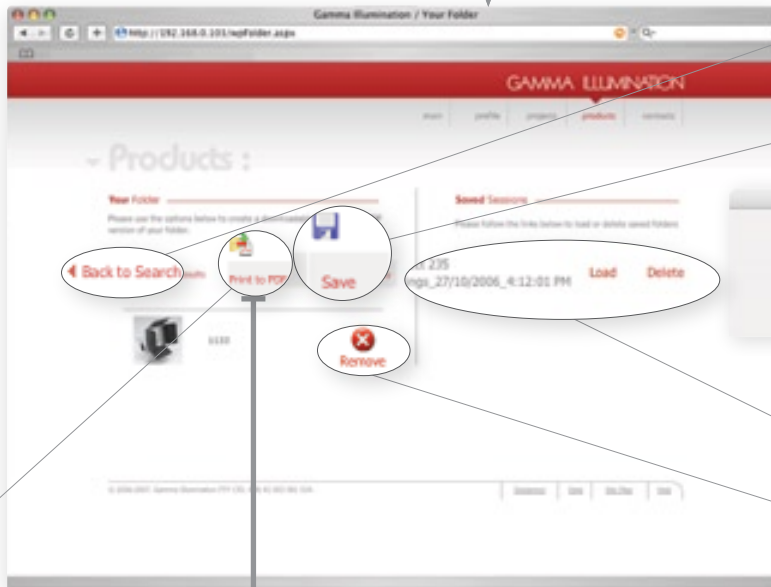
Second Level ▾ Search Results Expanded



Notice the number of results pages, if there are more than one page a "Next" page button will appear for clicking on.

Links to photometric data, drawing (specification diagram) and accessories.

Third Level ▾ Your Folder



Click to create a PDF of your selected folder.

Go back to search results to add more products to your folder.

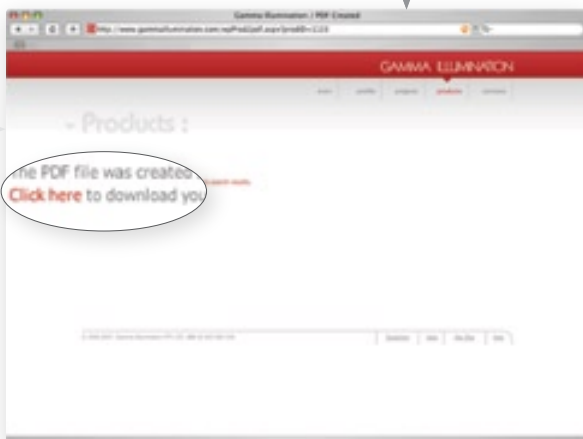
Clicking on "Save" will prompt the dialogue box (see below) - Click "Cancel" to create a new folder.

Click on "Load" to load previous saved folder(s).

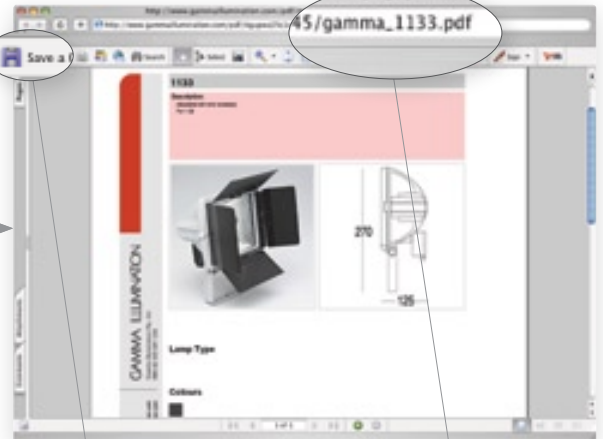
Click to remove fitting from present folder.



Fourth Level ▾ PDF Download



Fifth Level ▾ PDF Viewing



Click "Save" to download to your harddrive.

PDF will have a unique name for appropriate file reference.